

London Energy Partnership

Transforming London into a world-class city for sustainable energy

EU Energy Commission Meeting

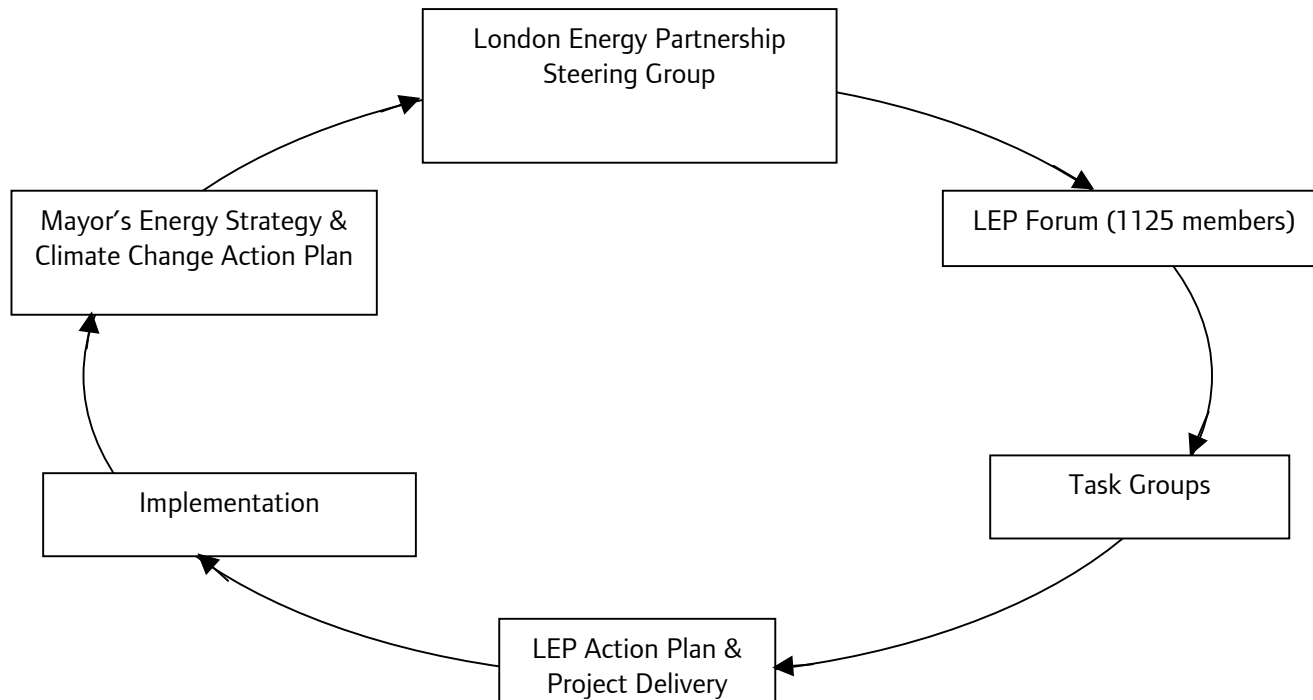
6th March 2007

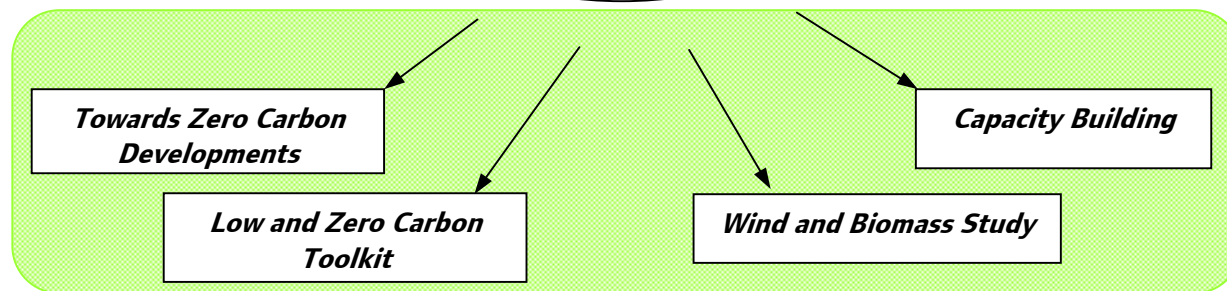
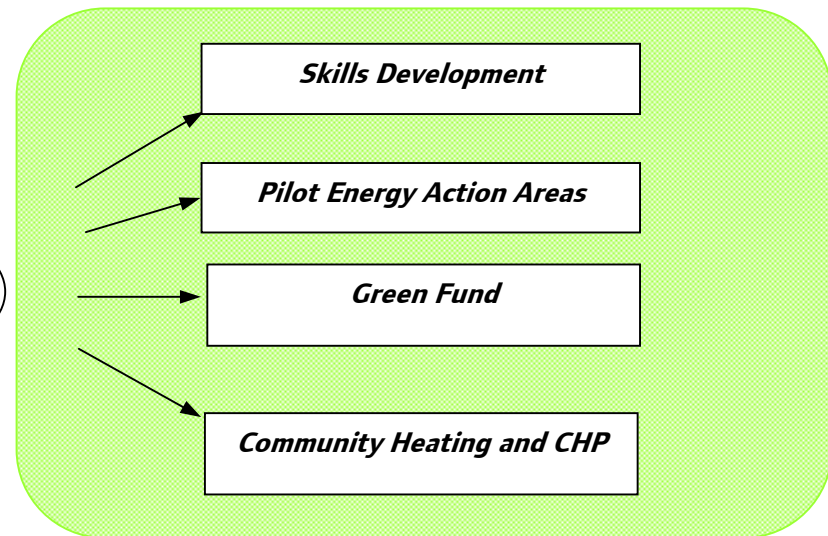
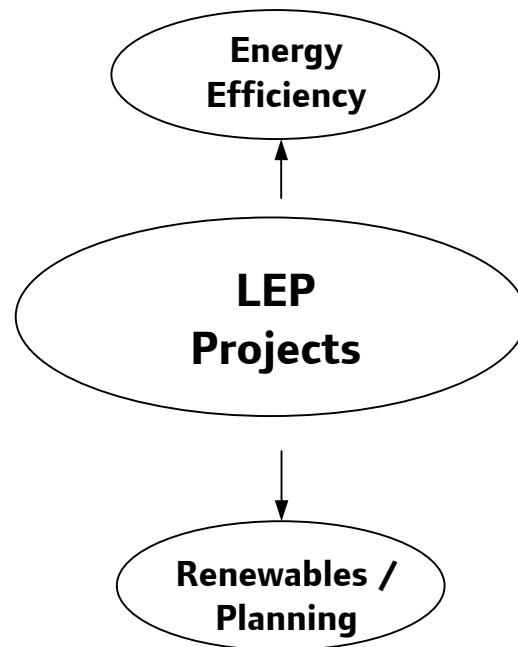
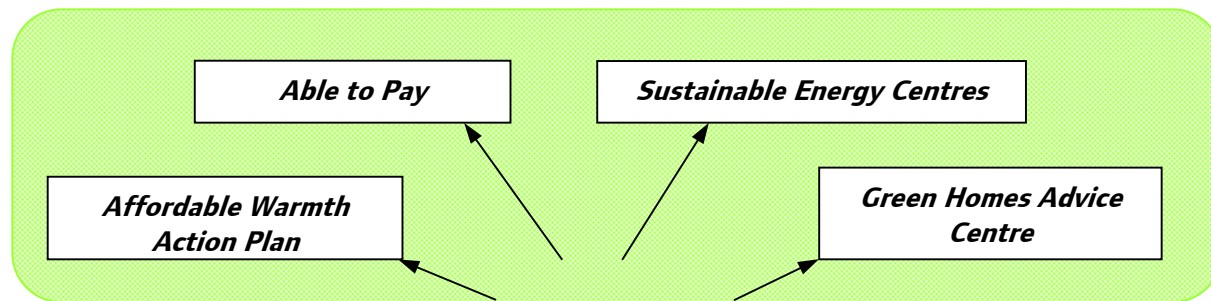
David Green, Chair of the London Energy Partnership

www.lep.org.uk



London Energy Partnership

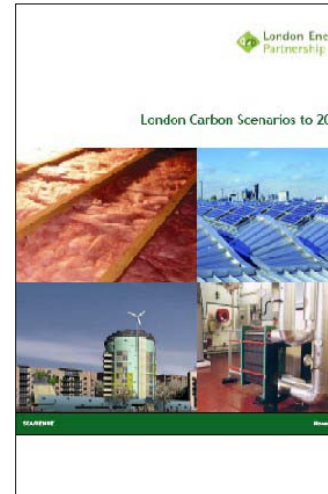






Investing in London's Future

- Carbon scenarios to 2026
 - £8.5 billion required over 20 years to meet London's Carbon reduction target
- Investing in the low carbon future
 - Substantial investment appetite identified
 - Onward work looking at a Low Carbon Fund for London, a Buying Mutual / Co-operative, Rental ESCO scheme, and a Low Carbon Business Advisory Service.



Energy Action Areas



Southwark - Elephant and Castle



Barking Town Centre

- Pilot EAA programme
- Network of learning
- ESCOs advice & support
- Guide to Becoming an EAA
- Carbon Accounting
- Round 2 of Energy Action Areas

Planning and Development: Toward Zero Carbon Development

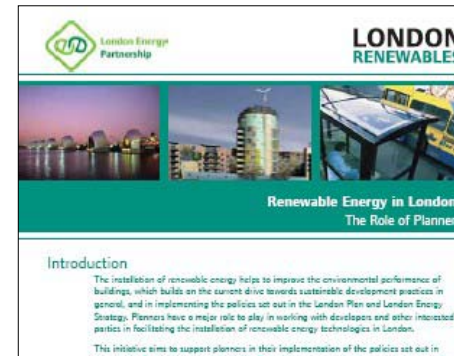
- Supportive information for boroughs
- Target of one zero carbon development per borough by 2010
- Definition of zero carbon development
- Steps a borough can take to take this forward, stakeholders, planning policy
- Report published July 2006



Planning policy: making it happen

Initially training and support to planners and elected members including:

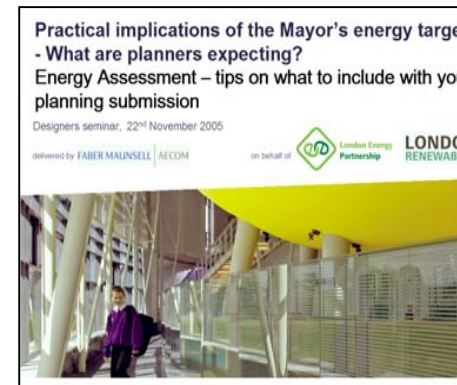
- Summary Documents about renewable energy
- Energy efficiency & renewable energy training sessions delivered to
 - 28 Local Planning Authorities (> 338 planning officers) in house
 - 17 Elected Member Committees (> 75 Elected Members) in house
 - 12 London Housing Associations
- Boroughs with policies





Planning & development: Planning policy: making it happen

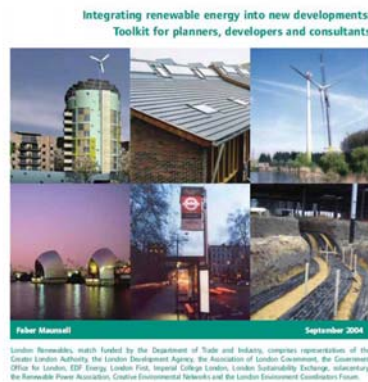
- Designers (architects & engineers): seminars & articles.
- Direct support to London borough planners
 - Consultants working with the case officer on specific cases – pre & post application
 - Key learning include:
 - a) ongoing learning and support needed
 - b) Meetings with GLA, Boroughs and the developer are a good opportunity
 - c) Use of existing energy expertise, which planners may not be aware of
- Next phase: training the trainers
 - university and CPD



Toolkit



LONDON
RENEWABLES



- **London Renewables Toolkit**

- Paper toolkit, published in September 2004
- Provides info. on different renewable technologies most applicable to London (including what they look like, constraints they have and planning / legislative issues), the types of development they most suit and the costs and their benefits

- **Electronic Toolkit – *Low Carbon Designer***

- Under development, targeted mainly at engineers & architects
- Will allow step by step considerations of the key technologies and design considerations in the 3 areas of energy – energy efficiency, efficient supply and renewable energy to ensure development consider all aspects of energy early on
- Dual purpose – standard building but also to help those working toward zero carbon development

Renewables: Wind and Biomass

Wind: potential for installing commercial-scale non-building integrated wind turbines. (>100kW)



- **50.34MW of wind energy capacity identified** which would lead to 144. GWh of electricity generated annually.

Biomass

- Potential to displace around 10% of conventional energy sources, saving around **3.5 million tonnes of CO₂ a year**
- Ongoing work to establish a **secure supply chain** of biomass fuel for London and an agreed set of **Guidelines for Developers and Planner**



Skills Study

- Highlights skills activity and broad skills gaps in energy efficiency and renewable energy
- Huge array of drivers for skills market – high impacts 2007-9
- Multiple skills sector councils for energy

Recommendations include:

- Input to Mayor's Skills & Employment Board's work
- Establish Energy Trainers Forum
- Roll out planners training
- Work to mainstream energy in every day working practice



Community Heating and CHP task group

- Action plan – key activities identified include:
 - Influence and stimulate activities to take forward GLA London-wide Community Heating Study
 - Create a positive environment and promote the development of CH in London (incl. developing a marketing plan, embedding CH in planning and addressing skills gaps)
 - Create and maintain a database of CH data across London
 - Protection of existing CH and CHP



Energy Efficiency and Fuel poverty – in domestic properties

- Development of umbrella brand concept for Fuel 'rich'
- Assistance with Green Concierge service
- Assistance with GLA on energy supplier discussions
- Ongoing: discussion paper for Fuel Poverty Action Plan – Meeting needed to develop proposal for fuel poverty project

Energy Efficiency

– in commercial properties