

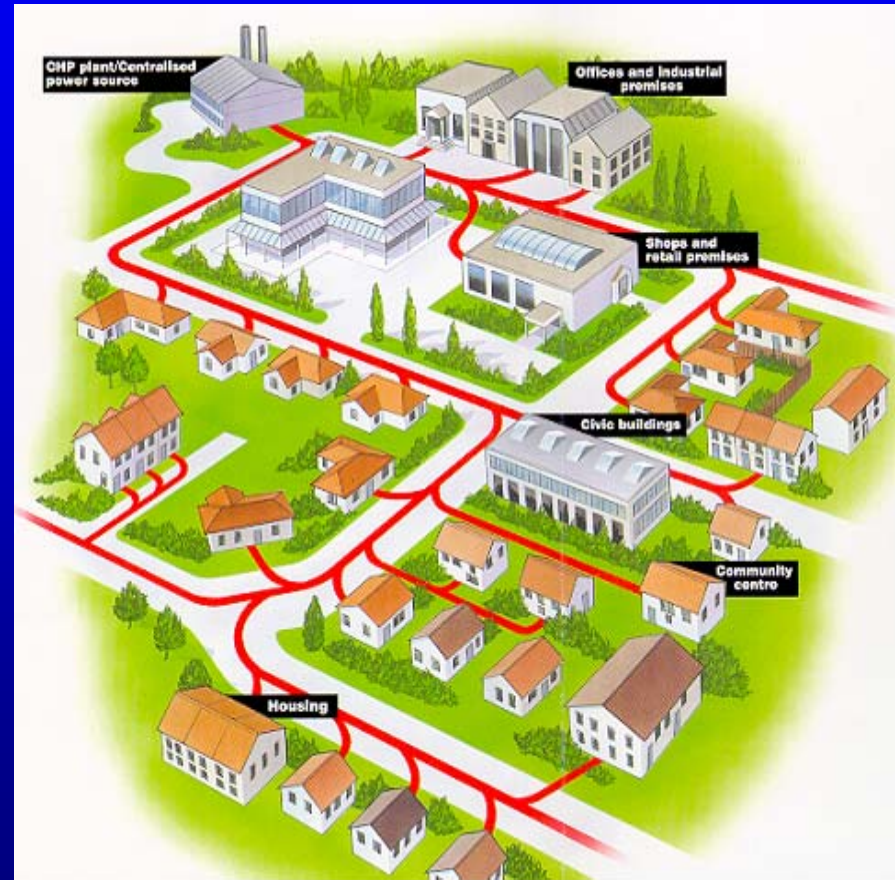
Michael King

**Associate
Combined Heat & Power Association
Chairman
Community Heating & CHP Task Group
London Energy Partnership**

**ESCO's
Community Heating and CHP**

The Benefits of Heat Networks

- **Optimisation of plant**
 - Complementary loads
 - Capacity/load ratio - sizing
- **Utilisation of CHP**
- **Utilisation of waste heat**
- **Utilisation of alternative fuels**
- **System security**
- **Opportunity for cooling**
- **Futureproofing/adaptability**
- **Lower maintenance**
- **Lower customer costs**
- **Improved safety**



Potential for Community Heating in London

UK Potential Study identifies potential:

- 18,263 MWe at 6% discount rate
- 27% of total UK potential in London

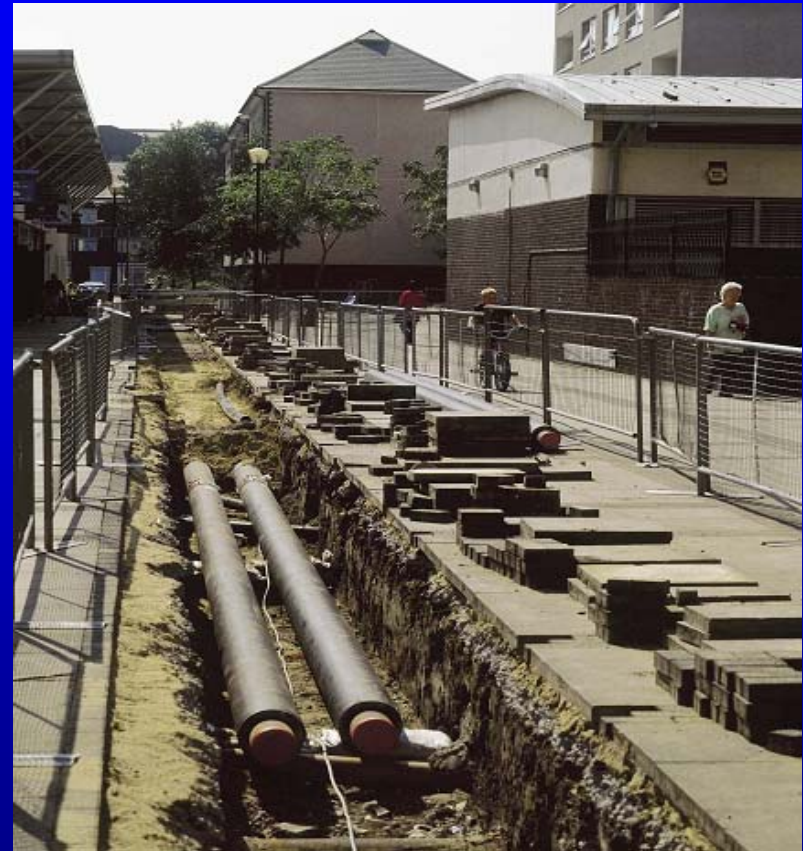
Source: The Potential for Community Heating in the UK 2002

- **GLA CH Development Study suggests a fifth of all London homes could be connected**

Source: GLA Community Heating Development Study 2006

- **100,000 homes in London are connected to existing CH networks**

Source: Carbon Emissions and London's Housing Report 2007



Barkentine Estate, Tower Hamlets E14

Community Heating & CHP Task Group

Vision:

- To develop CH networks (CH) in London to deliver a low carbon world city
- To develop CH networks (CH) in London to deliver a low carbon world city
- Ensure every opportunity for increasing CH and associated low/zero carbon technology is realised

Membership:

Key Boroughs, GLA, LDA, GoL, Thames Gateway Development Corporation, LCCA, Communities England, CHPA, Energy Saving Trust, Renewable Energy Association, London Boroughs Energy Group, London HECA Forum



Greenwich Millennium Village SE10

Community Heating Task Group

Action Plan

Key Objectives:

- Influencing and stimulating activities to take forward the GLA London-wide Comm Heating Study
- Creating a positive environment and promote the development of CH
- Creating and maintaining a database of CH data in London
- Protecting existing CH and CHP



Barratts Tachbrook Triangle,
Vauxhall Bridge Road SW1

Influencing and stimulating activities to take forward the GLA Community Heating Study

Supporting the development of schemes in Southwark & Tower Hamlets by:

- Encouraging political support and leadership
- Encouraging local support by giving presentations to local stakeholders
- Identifying key players and resources to support development
- Providing a forum for potential partners to meet

Supporting implementation of schemes in Lewisham and Barking & Dag'ham

- Providing expert support/encouragement to the Boroughs/project partners
- Encouraging the industry to engage with projects
- Providing guidance to the Boroughs/partners on how to address local community responses to the schemes

Creating a positive environment and promote the development of CH

- **Develop, create and implement a marketing plan**
 - Identify target audiences
 - Develop key messages
 - Identify engagement activities
 - Consider role of Group and other stakeholders in delivery
 - Outline resource and budget requirements for delivery
- **Embedding community heating in planning**
 - Encourage the explicit inclusion of community heating in LDFs
 - Work with the GLA to identify boroughs updating their LDFs
 - providing support/guidance/information to encourage the inclusion of CH
 - Supporting the GLA in its provision of comments to Boroughs on their revised LDFs
 - Identify and highlight exemplar Boroughs

Creating and maintaining a database of community heating data in London

There is a desire for accurate, up-to-date and robust data on the extent and nature of community heating across London. A database should map existing community heating (showing scale, age and building types served), indicate links with CHP and other major heat generation and indicate opportunities for links/clusters.

Actions:

- Developing the business case/rationale for the database**
- Identifying potential organisations that could fund and support the development of the database**
- Identify organisations to develop, deliver & maintain the database**
- Working with the delivery organisation to ensure that data collection links with awareness raising activities**

Protecting existing CH and CHP

The Group wishes to protect existing CH and CHP capacity.

- **Intervene on a case by case basis where a scheme is at risk.**
- **Seek support for scheme retention from Mayor, Deputy Mayor and political leaders**
- **Close engagement with Boroughs to identify and protect schemes at risk**
- **Work with GLA Housing Team to ensure investment decisions support retention of existing schemes**
- **Consideration and scoping of a Code of Practice for Boroughs, RSLs and others**



**Pimlico District Heating Undertaking
Churchill Gardens, SW1**

Making ESCO's Work:

Guidance and Advice on Setting Up & Delivering an ESCO

Action Energy Areas all intend to establish ESCO's. Requested guidance on implementation. LEP commissioned report from Brodies. Provides information on:

- range of models in UK and abroad
- key issues to be considered
- legislative framework
- energy regulations
- energy market issues ROC's LEC's DUOS etc
- planning matters

First time this has been brought together in one document. Necessarily a snapshot as the market and frameworks are evolving rapidly. Enormous interest beyond London.

www.lep.org.uk

